






2/2-way Solenoid Valve for gases and fluids



Type 0290 can be combined with...

- Universal valve with coupled diaphragm system
- Switches without differential pressure
- For gases and liquids
- Brass and stainless steel bodies
- Seal material NBR, EPDM and FPM
- Approvals:     



Type 2508
Cable plug



Type 1078
Timer unit



Type 2511
ASI cable plug

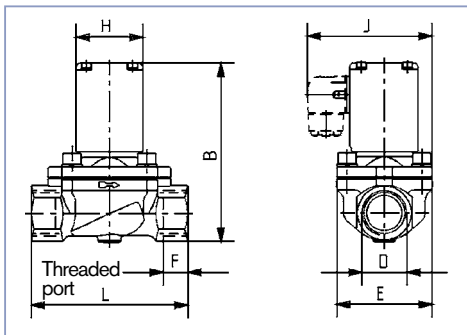


Type 8600
Dosing control

Pilot-controlled normally-closed valve with servo-diaphragm, forced valve lifting and coupled magnetic system. The valve switches without differential pressure from 0 bar with gases and liquids.

| Power consumption | | |
|-------------------|--------|------|
| Orifice | Inrush | Hold |
| [mm] | [W] | [W] |
| 12 | 80 | 6 |
| 20 - 40 | 100 | 9 |
| 50 | 30 | 30 |

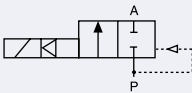
| Technical data | |
|--|---|
| Orifice | 7/16" - 2" (DN 12 - 50 mm) |
| Body material | Brass, stainless steel 1.4581 |
| Internal parts of valve | Brass, stainless steel 1.4105, 1.4301 |
| Seal material | NBR, FPM, EPDM |
| Media NBR FPM EPDM | Neutral media, compressed air, water, hydraulic oil Per-solutions, hot oils, oxygen Oil and fat-free media, e.g., hot water |
| Media temperature for NBR for FPM for EPDM | +14 to +176°F (-10 to +80°C) +32 to +138°F (0 to +120°C) -22 to +138°F (-30 to +120°C) |
| Ambient temperature | Max. +131°F (+55°C) |
| Voltage tolerance | ±10% |
| Duty cycle | 100% continuous cycle |
| Electrical connection | Cable plug for Ø 7 mm cable (supplied as standard) |
| Protection class | IP 65 with cable plug |
| Installation | As required, preferably with actuator upright |



| Dimensions [mm] according to DIN 2501 | | | | | | | |
|---------------------------------------|-----------|-------|-----|----|----|-------|-------|
| DN | D | B | E | F | H | J | L |
| 12 | NPT 1/2 | 95.5 | 40 | 14 | 40 | 73.0 | 74.5 |
| 20 | NPT 3/4 | 122.0 | 60 | 16 | 49 | 86.5 | 100.0 |
| 25 | NPT 1 | 131.0 | 70 | 18 | 49 | 91.5 | 115.0 |
| 32 | NPT 1 1/4 | 145.0 | 85 | 20 | 49 | 99.0 | 126.0 |
| 40 | NPT 1 1/2 | 154.0 | 85 | 22 | 49 | 99.0 | 126.0 |
| 50 | NPT 2 | 211.0 | 115 | 24 | 72 | 126.0 | 164.0 |

Solenoid valves

Ordering chart for valves (other versions on request) – all valves with cable plugs, brass bodies and various diaphragm materials

| Circuit function | Orifice [mm] | Port connection [NPT] | Cv value water [GPM] | Pressure range [psij] | Body material | Voltage/ universal [AC/DC] | Approval ratings ²⁾ | Order number |
|--|--------------|-----------------------|----------------------|-----------------------|-----------------|----------------------------|--------------------------------|--------------|
| A 2/2-way valve NC  | 12 | NPT 1/2 | 3.3 | 0 - 232 | Brass | 24 | UR | 453 877 X |
| | | | | | | | UL | 452 746 A |
| | | | | | | | - | 452 239 E |
| | | | | | | 120 | UL | 453 058 D |
| | | | | | | | - | 450 869 Q |
| | | | | | | 240 | UL | 452 745 H |
| | 12 | NPT 1/2 | 3.3 | 0 - 232 | Stainless Steel | 24 | UR | 454 216 Z |
| | | | | | | | UL | 453 179 B |
| | | | | | | | - | 452 241 G |
| | | | | | | 120 | UL | 452 819 U |
| | | | | | | | UL | 453 180 Z |
| | | | | | | 240 | UL | 453 180 Z |
| | 20 | NPT 3/4 | 5.8 | 0 - 232 | Brass | 24 | UR | 453 878 G |
| | | | | | | | UL | 453 181 N |
| | | | | | | | - | 450 639 R |
| | | | | | | 120 | UL | 453 182 P |
| | | | | | | | - | 450 836 X |
| | | | | | | 240 | UR | 455 291 W |
| | 20 | NPT 3/4 | 5.8 | 0 - 232 | Stainless Steel | 24 | UR | 454 412 N |
| | | | | | | | UL | 453 184 R |
| | | | | | | | UR | 453 792 S |
| | | | | | | | UL | 452 747 B |
| | | | | | | | - | 450 748 W |
| | | | | | | 240 | UL | 456 119 S |
| | 25 | NPT 1 | 11.7 | 0 - 232 | Brass | 24 | UL | 452 862 X |
| | | | | | | | - | 450 649 T |
| | | | | | | 120 | UR | 453 793 T |
| | | | | | | | UL | 453 185 J |
| | | | | | | | - | 450 474 C |
| | | | | | | 240 | UL | 457 230 E |
| 25 | NPT 1 | 11.7 | 0 - 232 | Stainless Steel | 24 | UL | 453 187 L | |
| | | | | | | - | 452 253 C | |
| | | | | | 120 | UR | 453 794 U | |
| | | | | | | UL | 453 188 V | |
| | | | | | | UL | 453 189 W | |
| | | | | | 240 | UL | 453 189 W | |
| 32 | NPT 1 1/4 | 18.0 | 0 - 174 | Brass | 24 | - | 455 624 T | |
| | | | | | 120 | - | 453 641 A | |
| 40 | NPT 1 1/2 | 18.0 | 0 - 174 | Brass | 24 | - | 455 625 U | |
| | | | | | 120 | - | 453 642 B | |
| | | | | | 240 | - | 454 276 D | |
| 50 | NPT 2 | 44.0 | 0 - 174 | Brass | 120 | - | 453 643 C* | |
| | | | | | 240 | - | 454 263 G* | |

For 50 mm orifice and UC (universal current), the cable plug has an integrated single-phase bridge.