
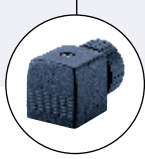


## 2/2-way Solenoid Valve for high pressures and temperatures



- Seat valve, direct-acting
- Pressure range up to 507 PSI
- Media temperature up to 356°F (250°C)
- Push-over solenoid system
- For gases and fluids
- Approvals: 

Type 0255 can be combined with...



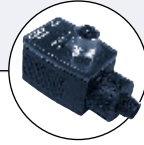
**Type 2508**

Cable plug



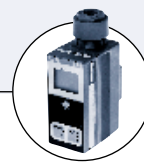
**Type 1078**

Timer unit



**Type 2511**

ASi cable plug

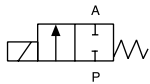


**Type 8600**

Dosing control

The direct-acting plunger solenoid valve Type 0255 is also suitable for high pressures and high temperatures.

Circuit function A



2/2-way valve, normally closed by spring force

Technical data	
<b>Orifice</b>	DN 1.0 - 6.0 mm
<b>Body material</b>	Brass with stainless steel seat 1.4305 or stainless steel 1.4581
<b>Seal material</b>	PTFE (others on request)
<b>Media</b> FPM PTFE	Hot air, hot oils, oils with additives, per-solutions Water, steam, fuels, hydraulic materials, alcohol, organic solvents, waste gas
<b>Media temperature</b> PTFE on request	-40°F to 356°F (-40 to +180°C) Up to 482°F (+250°C)
<b>Viscosity</b>	Max. 21 cSt
<b>Ambient temperature</b>	131°F (482°F on request) (+55°C (+250°C on request)), please see ordering chart
<b>Voltage tolerance</b>	± 10%
<b>Duty cycle</b>	100% continuous rating
<b>Electrical connection</b>	▪ Cable plug for Ø 7 mm cable (supplied as standard)
<b>Protection class</b>	IP 65 with cable plug
<b>Installation</b>	As required, preferably with actuator upright
<b>Flow rate</b> C <sub>v</sub> value water [GPM]	measured at 68°F (+20°C), 14 PSI pressure at valve inlet and free outlet (see ordering chart)
<b>Pressure valves [PSI]</b>	gauge pressures with respect to the prevailing atmosphere pressure (see ordering chart)
<b>Response times [ms]</b> Opening Closing	measured with water at valve outlet at 87 PSI and 68°F (+20°C) pressure build-up 0 to 90% pressure decay 100 to 10% (see ordering chart)

## Technical data

Orifice [mm]	Inrush	Hold		Response times				Weight [kg]
				Opening [ms]		Closing [ms]		
	AC [VA]	AC [VA/W]	DC [W]	AC	DC	AC	DC	
1.0-6.0	35-40	16/10	approx.12	10-20	20-80	20-30	20-30	0.6

## Ordering chart for valves (other versions on request)

Circuit Function	Orifice [inch]	Flow Rate		Port Connection [NPT]	Pressure Range <sup>2)</sup> $\Delta$ [PSI] For Liquids	Body Material	Seal Material	Approvals	Voltage/Frequency [V/Hz]	Item no.	
		Water C <sub>v</sub> -Value [GPM]	Air <sup>1)</sup> QNn [SCFM]								
A	5/64	0.14	4.6	1/4	0 - 290	Brass	PTFE	-	24/DC	121 953 M	
					0 - 290	Stainless	PTFE	UL	24/DC	456 160 F	
					0 - 507	Stainless	PTFE	UR	120/60	454 774 G	
					0 - 507	Stainless	PTFE	UL	120/60	US03759	
	1/8	0.29	9.5	1/4	0 - 145	Brass	PTFE	UR	24/DC	452 431 P	
					0 - 145	Brass	PTFE	UL	24/DC	457 930 U	
					0 - 232	Brass	PTFE	UL	120/60	457 955 Z	
					0 - 145	Stainless	PTFE	UR	24/DC	452 435 K	
					0 - 232	Stainless	PTFE	UL	120/60	452 886 Q	
					3/8	0 - 145	Brass	PTFE	-	24/DC	456 228 F
						0 - 145	Brass	PTFE	UL	24/DC	US04300
						0 - 232	Brass	PTFE	UR	120/60	454 096 M
						0 - 232	Brass	PTFE	UL	120/60	US03383
					1/2	0 - 232	Brass	PTFE	UL	120/60	454 867 W
						0 - 232	Brass	PTFE	UL	120/60	454 867 W
					5/32	0.58	19.0	1/4	0 - 145	Brass	PTFE
	0 - 58	Brass	PTFE	UR					24/DC	452 439 X	
	0 - 58	Brass	PTFE	UL					24/DC	US06007	
	0 - 145	Brass	PTFE	UR					120/60	452 440 C	
	0 - 145	Brass	PTFE	UL					120/60	US01211	
0 - 58	Stainless	PTFE	UL	24/DC					457 972 S		
0 - 145	Stainless	PTFE	UR	120/60					US01456		
0 - 145	Stainless	PTFE	UL	120/60					452 894 Q		
0 - 58	Brass	PTFE	-	24/DC					453 668 M		
0 - 145	Brass	PTFE	UR	120/60					454 121 J		

<sup>1)</sup> Measured with 85 PSI upstream pressure and a pressure drop of 14 PSI across the valve at 68°F, <sup>2)</sup> also suitable for vacuum

$\Delta$  Limited pressure range for liquid fluids (see chart on page 2)

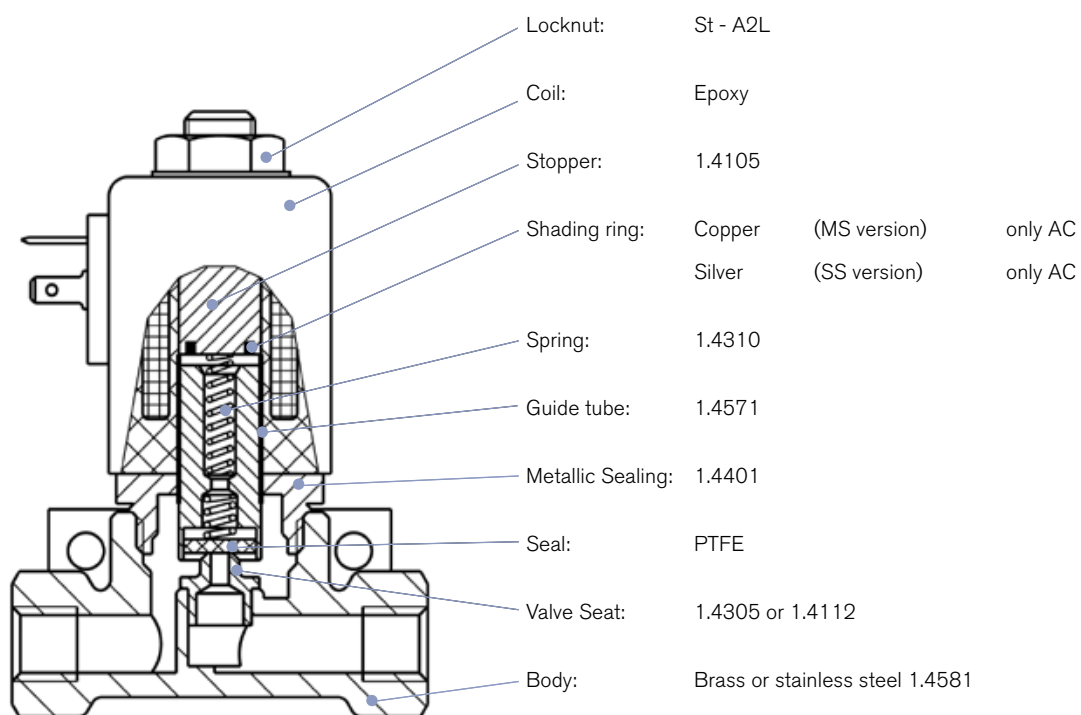
## Ordering chart for valves (other versions on request)

Circuit Function	Orifice [inch]	Flow Rate		Port Connection [NPT]	Pressure Range <sup>(2)</sup> $\Delta$ [PSI] For Liquids	Body Material	Seal Material	Approvals	Voltage/Frequency [V/Hz]	Item no.	
		Water C <sub>v</sub> -Value [GPM]	Air <sup>(1)</sup> QNn [SCFM]								
A	5/32	0.58	19.0	3/8	0 – 140	Brass	PTFE	UL	120/60	452 890 Y	
					0 – 140	Brass	PTFE	UR	240/60	456 014 L	
					0 – 140	Brass	PTFE	UL	240/60	456 684 Z	
					0 – 140	Stainless	PTFE	UR	120/60	453 527 Q	
					0 – 140	Stainless	PTFE	UL	120/60	454 365 E	
	3/16	0.76	25.0	1/4	0 – 85	Brass	PTFE	UR	120/60	452 448 G	
					0 – 85	Stainless	PTFE	–	120/60	454 514 L	
				1/2	0 – 85	Stainless	PTFE	UL	24/DC	456 215 S	
	1/4	0.93	30.0	1/4	0 – 55	Brass	PTFE	UR	24/60	452 455 X	
					0 – 55	Brass	PTFE	UL	24/60	452 905 T	
					0 – 14	Brass	PTFE	UR	24/DC	452 454 W	
					0 – 14	Brass	PTFE	UL	24/DC	US00979	
					0 – 55	Brass	PTFE	UR	120/60	452 456 Y	
					0 – 55	Brass	PTFE	UL	120/60	452 906 U	
					0 – 55	Brass	PTFE	UR	240/60	452 457 Z	
					0 – 55	Brass	PTFE	UL	240/60	455 100 B	
					0 – 14	Stainless	PTFE	UR	24/DC	452 458 A	
					0 – 14	Stainless	PTFE	UL	24/DC	US01693	
					0 – 55	Stainless	PTFE	UL	120/60	452 909 F	
					0 – 55	Stainless	PTFE	UL	240/60	455 101 Y	
					3/8	0 – 55	Brass	PTFE	UL	120/60	454 181 P
						0 – 55	Brass	PTFE	–	240/60	457 336 U
						0 – 55	Brass	PTFE	UL	240/60	US06016
	1/2	0 – 55	Brass	PTFE	UL	120/60	454 813 Q				
		0 – 55	Stainless	PTFE	UR	24/60	456 737 V				
		0 – 55	Stainless	PTFE	UL	24/60	US05850				
		0 – 14	Stainless	PTFE	–	24/DC	455 519 S				
		0 – 55	Stainless	PTFE	UR	120/60	453 526 P				
	0 – 55	Stainless	PTFE	UL	120/60	454 147 U					

<sup>1)</sup> Measured with 85 PSI upstream pressure and a pressure drop of 14 PSI across the valve at 68°F, <sup>2)</sup> also suitable for vacuum

$\Delta$  Limited pressure range for liquid fluids (see chart on page 2)



**Ordering chart for valves** (other versions on request)

**Mounting set**

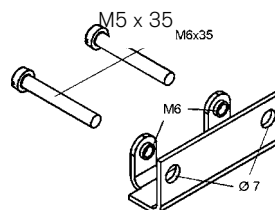
- 2 M5 x 35 cheesehead screws
- 1 mounting bracket

Valve mounted using mounting kit

Refer to the dimensional drawings for the valve

37 mm separation between the M5 threaded holes

48 mm separation between the Ø7 bores



Item no. 151 287

(only for brass body versions)

Mounting set for stainless steel versions on request

