

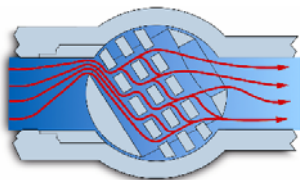
neles

Rotary control valves

Metal seated high performance butterfly and ball valves for difficult applications and high temperatures

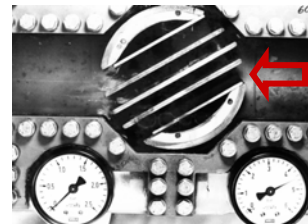
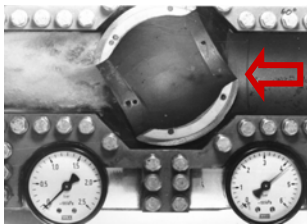
Choose Neles when dependability is your key selection criteria.

Neles Q-Trim solves noise and cavitation problems in rotary control valves.



Neles Q-Trim combines the principles of pressure drop staging and flow division to control cavitation and noise.

Neles Q-Trim is available in Neles metal seated ball valves, segment ball valves and eccentric rotary plug valves.



In this comparative flow test, two cutaway ball valves drop approximately 60 psig to atmospheric pressure. The valve on the Left, without Q-Trim, shows heavy cavitation (note vapor bubbles exiting the valve). The one on the right, with Q-trim, shows practically no cavitation and noise is 10 dBA lower.



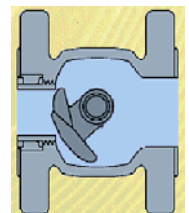
Metal seated high performance butterfly valves



Metal seated ball valves



segment ball valves



Eccentric rotary plug valves